



£126,000

Oakley House, 4 Hotspur Street, Kennington, London, SE11 6BT

Flat | 1 Bedroom | 1 Bathroom

02080505452


Lyss Homes

www.lysshomes.co.uk



Step Inside

Key Features

- One bedroom
- One bathroom
- Private balcony
- West facing
- Third floor with lift access
- Fitted wardrobe
- Ample storage cupboards in hallway
- Short walk to Kennington Station
- Years remaining on lease: 109 years
- Service charge: £2867 per annum
- Monthly rent on unowned share: £604.56
- Council tax: Lambeth (Band D)

Property Description

Shared ownership: 30% Take a look at this beautifully presented third floor flat in Oakley House, Hotspur Street - a charming location that could be the perfect setting for your new home!

Main Particulars

[WATCH VIDEO](#)

Shared ownership: 30%

Take a look at this beautifully presented third floor flat in Oakley House, Hotspur Street - a charming location that could be the perfect setting for your new home!

As you step inside, you'll find a lovely south-east facing balcony, ideal for enjoying a morning cup of tea or soaking up the afternoon sun. The property also features a double bedroom which boasts a convenient fitted wardrobe - perfect for keeping your belongings organised. There is also ample storage space in the hallway cupboards.

Oakley House is located just an 11 minute walk from Kennington Underground station. Kennington is a vibrant area in South London, situated within the London Borough of Lambeth. It is known for its mix of residential charm, historic significance, and modern amenities. It boasts a rich history, with notable landmarks such as the Imperial War Museum and the Oval Cricket Ground. Kennington Park, one of London's oldest public parks, adds to the area's historical appeal.

The area is well-connected with excellent transport links. Kennington Underground Station serves the Northern Line, providing easy access to central London and beyond. Several bus routes also serve the area, making commuting straightforward. There are also a variety of local amenities including shops, cafes, restaurants, and pubs.

Don't miss out on the opportunity to make this flat your own - book a viewing today and envision the possibilities that await in this lovely home in Kennington.

THE ADVERTISED PRICE IS FOR A 30% SHARE OF THE PROPERTY. PROSPECTIVE BUYERS WILL BE REQUIRED TO UNDERGO AN AFFORDABILITY ASSESSMENT AND THE MAXIMUM AFFORDABLE SHARE AMOUNT WILL BE OFFERED

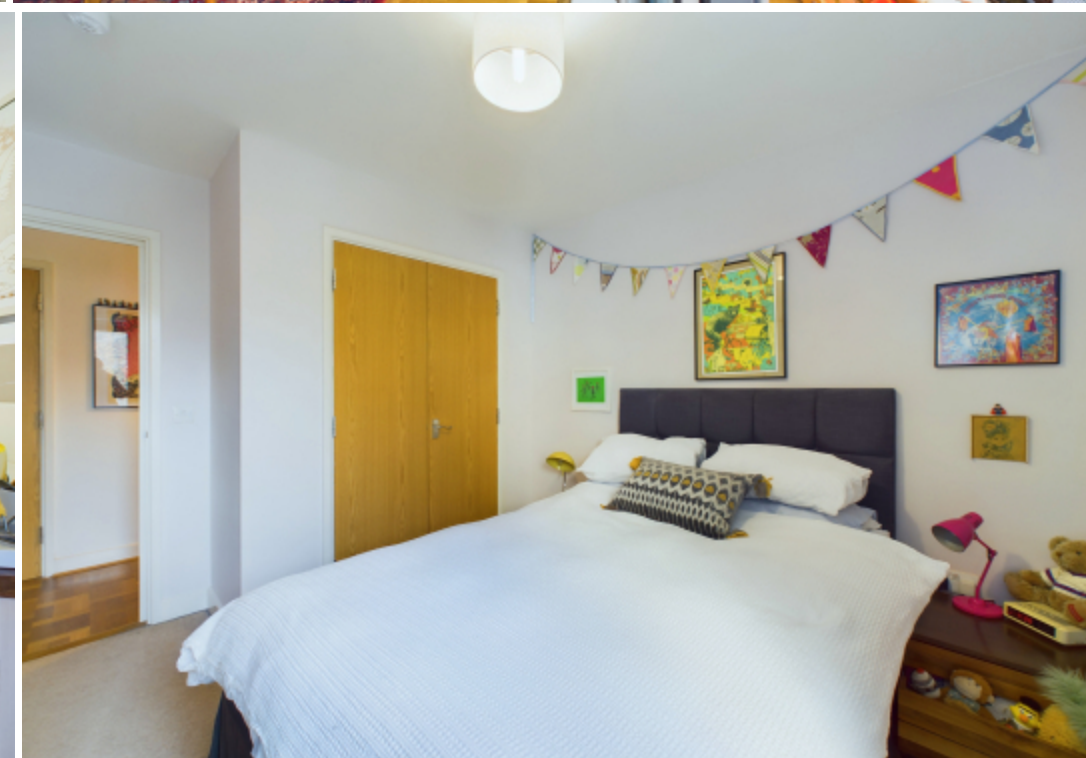




Image not found

This floorplan is for illustrative purposes only and the location of doors, windows and other items are approximate.

Telephone: 02080505452



www.lysshomes.co.uk